



NAPCO[®]

333 Bayview Avenue

Amityville, New York 11701

For Sales and Repairs, (800) 645-9445

For Technical Service, (800) 645-9440

Publicly traded on NASDAQ

Symbol: NSSC

© NAPCO 2006

100 VA TRANSFORMERS NP-TRF24100 & NP-TRF28100

WI1512 2/06



NP-TRF24100 - 24VAC 100VA 4.0A

NP-TRF28100 - 28VAC 100VA 3.5A

FEATURES

- **Dielectric strength - 4000VRMS**
- **UL Recognized**
- **Electrostatic Shield - Not required, dual bobbin**
- **Solder lug / quick connect terminals**
- **Class F insulation**
- **Flammability Rating - Bobbin/Shroud UL 94V0**
- **American and Canadian agency approvals; File #E180353**
- **CE marked** - Transformers meet international safety standards by providing high isolation, clearance, and increased flammability ratings. Chassis mounting style.

INSTALLATION INSTRUCTIONS

1. Mount the transformer in desired location / enclosure.
2. Terminals 1 and 5 represent 110VAC input.
Terminals 6 and 10 represent 24VAC or 28VAC depending on model.

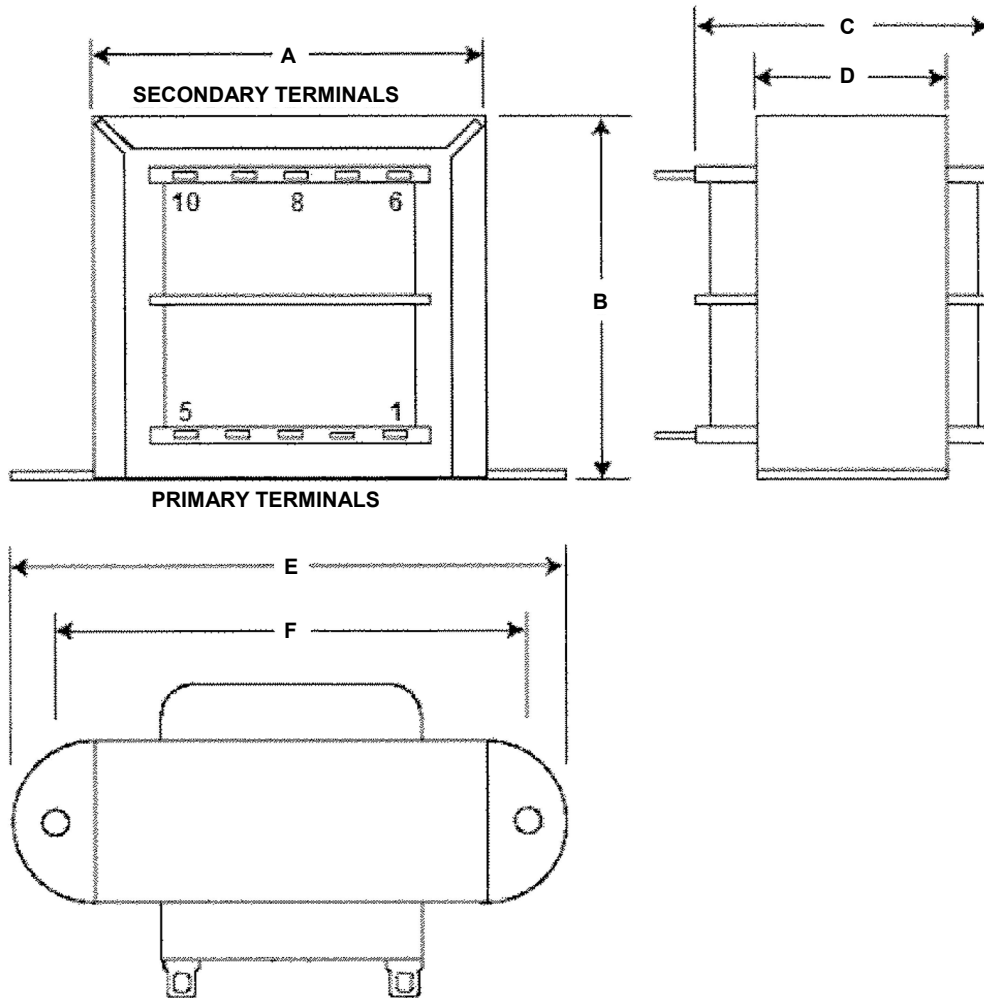
NOTE: It is important to measure output voltage before connecting devices.
This helps avoid potential damage.

3. Connect devices to secondary terminals on the transformer.

Warning: This installation should be made by qualified service personnel and should conform to all local codes and in accordance with the National Electrical Codes.

100 VA TRANSFORMERS

NP-TRF24100 & NP-TRF28100



Model #	Output	Amp	A	B	C	D	E	F	Approx. Ship Wt.
NP-TRF24100	24VAC / 100VA	4.00	3.06"	2.56"	2.25"	1.31"	4.031"	3.563"	2.75 lbs.
NP-TRF28100	28VAC / 100VA	3.50	3.06"	2.56"	2.25"	1.31"	4.031"	3.563"	2.75 lbs.