

Napco Security Technologies, Inc. is proud to manufacture the finest quality products. Our focus is exclusively on security design and innovation. That's why you can expect the best in security products from the Napco Family of Companies:



NAPCO[®]
Intrusion &
Fire Systems



Continental
Access[®] 
Enterprise Access Control
Systems




ALARM LOCK[®]
Electronic Access &
Exit Locks




MARKS
USA[®]
Architectural, Life-Safety &
Security Locks



- Intrusion Systems, Hardwire & Wireless, Conventional & Addressable
- Fire Systems, Hardwire & Wireless, Conventional & Addressable
- Motion detectors, wireless transmitters, Keyfobs, wireless receivers
- Interactive Remote Services & Touchpad, Video, Alarms, Lighting, Temperature
- Wireless GSM Alarm Communicators & TCP/IP Panel Modules & CS Receiver
- **Napco Fusion™ Platform-Integrated**

www.napcosecurity.com
1-800-645-9445
salesinfo@napcosecurity.com

- Enterprise access control systems, scalable, 2 to thousands of doors
- Web Client supported
- 2-, 4-, 8-, 16- Door Controllers
- Multi-card, FIPS, iClass readers & biometrics
- Exit switches, REX motions, mags
- **Napco Fusion™ Platform Integration:** Access, video, DVR/NVR, locking & alarm systems

www.continentalaccess.com
631-842-9400
salesinfo@cicaccess.com

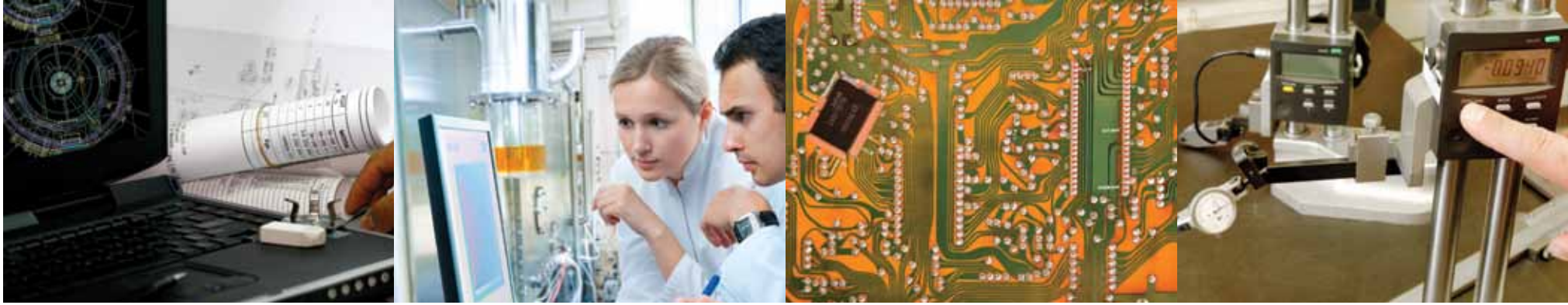
- Trilogy® standalone electronic access locks
- Networx™ wireless advanced networked locks, Ethernet or 802.11 communications
- Broadest line: PIN code & prox ID Card, Grade 1 Cylindrical, mortise, dual-sided, exit trim, narrow stile privacy/lockdown
- Remote release maglocks & RTEs
- Alarmed exit devices & door alarms
- **Napco Fusion™ Platform-Integrated**

www.alarmlock.com
1-800-ALA-LOCK
salesinfo@alarmlock.com

- Lifetime Warrantied Grade 1 & 2 Locksets Mortise, cylindrical, electrified deadbolts, tubular, architectural
- Triple play of matched Grade 1 & 2 locksets, panic devices, and door closers in all styles, functions and architectural finishes.
- Life Safety/Hospital Locksets- Line of ligature resistant door hardware
- Custom Locksets and engraving
- Ornamental iron & woven wire gate locks
- High security cylinders

www.marksusa.com
1-800-526-0233
salesinfo@marksusa.com

Security-Focused Innovation, Research & Development



ISO9001:2000 Quality Manufacturing; 250,000 Square-Foot Dual Factory Facilities



Expert, Personalized Customer & Technical Service from Napco's USA Headquarters. Application-Based Solutions.

