

Continental **Access**

A Napco Security Group Company



## CICE1996 Network Interface Programming

DATE: 8/15/2006

SOFTWARE VERSION AND BUILD: ALL VERSIONS

DOCUMENT PERTAINS TO: HARDWARE COMMUNICATIONS

# Hardware Guide

# CICE1996 Network Interface Programming

CONTINENTAL ACCESS  
355BAYVIEW DRIVE  
AMITYVILLE, NY 11701  
(631) 842-9400

Continental CICE1996 (Lantronix UDS-100)  
Initial Setup



Items needed:

<b><u>Qty</u></b>	<b><u>Description</u></b>
1	Lantronix UDS-10 with power supply.
1	Db25 to Db9 COM Cable
1	IP Address (supplied by End-User)
1	Netmask (supplied by End-User)
1	Gateway IP Address supplied by End-User (If necessary)
1	PC running Windows and HyperTerminal

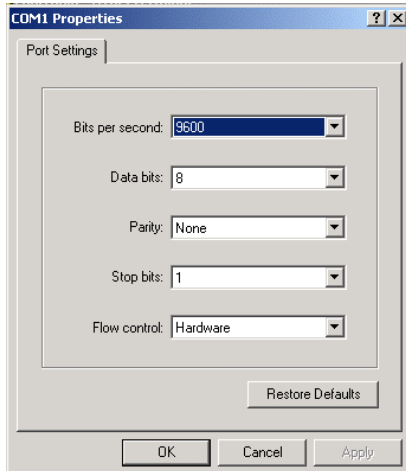
Programming Steps:

**Step 1** - Attach the Com cable from the PC to the db25 connector on the UDS-10.

**Step 2** -Open HyperTerminal (click Start, Programs, Accessories, Communications, HyperTerminal)

Set your port to the following:

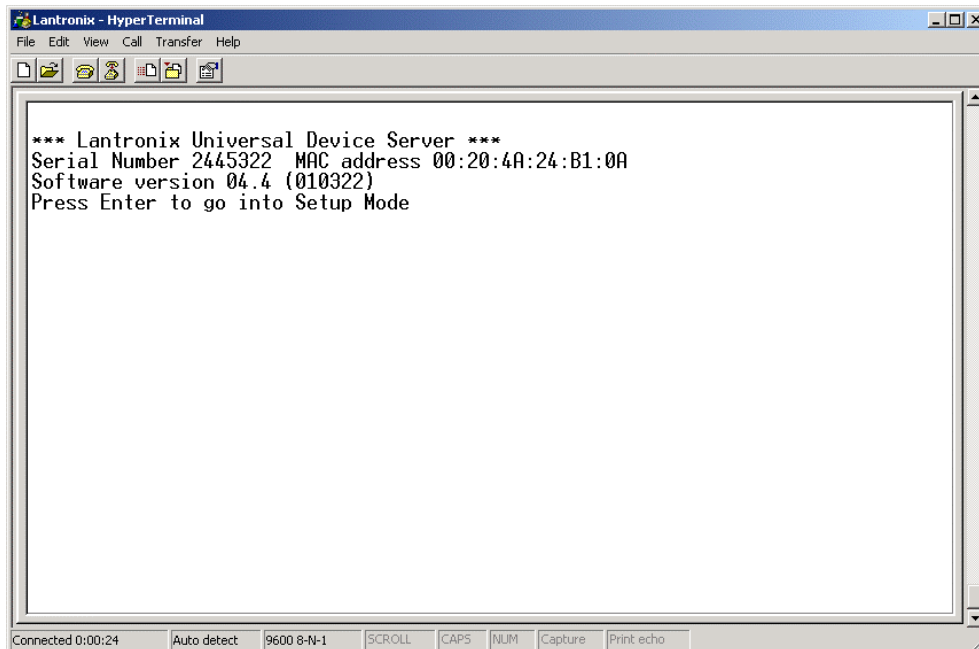
Figure 1- The Com Port properties screen



**Step 3** - Press and Hold the “x” key down while attaching the power plug on the UDS-10.

The following screen should appear:

Figure 2 – The HyperTerminal window



**Step 4** - Press “Enter”.

The following screen should appear:

Figure 3 – The Lantronix programming screen

```
*** Lantronix Universal Device Server ***
Serial Number 2445322 MAC address 00:20:4A:24:B1:0A
Software version 04.4 (010322)
Press Enter to go into Setup Mode

*** basic parameters
Hardware: Ethernet Autodetect

IP addr - 0.0.0.0/DHCP/AutoIP, no gateway set
DHCP device name : not set

***** Security *****
Telnet setup is      enabled
TFTP download is    enabled
Port 77FEh is       enabled
Web Server is       enabled
Enhanced password is disabled

***** Channel 1 *****
Baudrate 9600, I/F Mode 4C, Flow 00
Port 10001
Remote IP Adr: --- none ---, Port 00000
Connect Mode : C0  Discconn Mode: 00
Flush Mode : 00

Change Setup : 0 Server configuration
               1 Channel 1 configuration
               6 Security
               7 Factory defaults
               8 Exit without save
               9 Save and exit          Your choice ? _

Connected 0:01:33  Auto detect  9600 8-N-1  SCROLL  CAPS  NUM  Capture  Print.echo
```

**Step 5** - Press “0” to enter the server configuration.

**Step 6** - Enter your IP Address

**Step 7** - If your network requires you to pass thru a router to access the UDS-10 then Press “Y” to Set Gateway IP Address. Otherwise, hit “Enter”.

**Step 8** - If you entered “Y” in the previous step then enter the Gateway IP Address.

**Step 9** - Enter the Netmask. The following settings are for “**Classfull**” Addresses only. If the company is using “**Classless**” Addresses then the company will have to provide you with the amount of bits reserved for “Host”.

**If Class A IP Address enter 24**

**If Class B IP Address enter 16**

**If Class C IP Address enter 08**

Press the "Enter" key until we reach the main menu screen again.

Figure 4 - The Lantronix configuration screen

```
IP Address : (000) .(000) .(000) .(000)
Set Gateway IP Address (N) N
Netmask: Number of Bits for Host Part (0=default) (00)
Change telnet config password (N) N
Change DHCP device name (not set) ? (N) N

Change Setup : 0 Server configuration
                1 Channel 1 configuration
                6 Security
                7 Factory defaults
                8 Exit without save
                9 Save and exit
Your choice ?
```

**Step 10** - Press "1" to enter Channel 1 configuration.

Figure 5 - The Channel 1 configuration screen

```
Baudrate (9600)
I/F Mode (4C) ?
Flow (00) ?
Port No (10001) ?
ConnectMode (C0) ?
Remote IP Address : (000) .(000) .(000) .(000)
Remote Port (00000) ?
DisConnMode (00) ?
FlushMode (00) ?
DisConnTime ( 00:00) ?:
SendChar 1 (00) ?
SendChar 2 (00) ?

Change Setup : 0 Server configuration
                1 Channel 1 configuration
                6 Security
                7 Factory defaults
                8 Exit without save
                9 Save and exit
Your choice ? _
```

**Step 11** - If we are going to connect the UDS-10 using RS-232, the only change we need to make to this configuration is "**Port No**". It needs to be changed to "**3001**".

If we are going to connect the UDS-10 using RS-422 we also need to change the "**IF Mode**" to "**4D**".

Press the "**Enter**" key until we reach the main menu screen again.

**Step 12** - Press "9" and "Enter"

**Programming is complete!**

