

## PC Multi-processor setup

Continental **Access**  
A Napco Security Group Company



DATE: 6/1/2006

SOFTWARE VERSION AND BUILD:

VERSION 2.2 AND HIGHER

DOCUMENT PERTAINS TO: PROGRAMMING

CardAccess® 3000 



## CardAccess Multi-Processor Setup

This document describes what is required to properly setup the CardAccess application on a multi-processor machine. This does not cover the details of how to setup the SQL server database engine on a multi-processor machine. For directions on how to do that, please consult the “CA3000 SQL Installation Document.”

### **Important Note:**

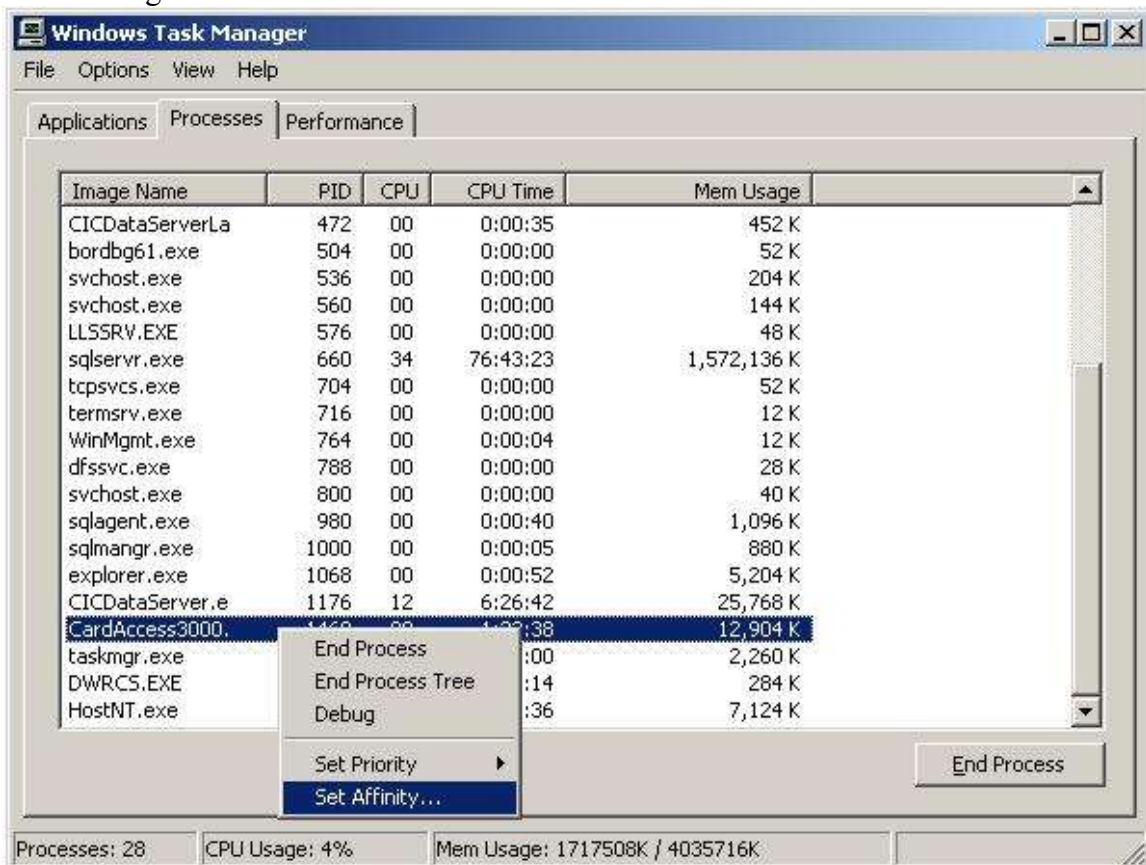
This process must be done each time CardAccess is started on the machine. These settings are not saved!

### **Note:**

If you do not know how to set this, please call Tech Support or ask your System Administrator. Not setting this properly can cause invariable results.

**Step 1:** Start the CardAccess application. You can click on the desktop icon (if you opted to install it), or from the Start menu (Start -> Program Files -> CardAccess 3000 -> CardAccess 3000).

**Step 2:** Open the Processes tab of the Task Manager and find the CardAccess3000 process. To start the Task Manager you can type Ctrl + Alt + Delete and click on the Task Manager Button.



**Step 3:** After you find the CardAccess3000 process, right click and select the “Set Affinity” menu item. Once you do this, you will be displayed with another screen. Uncheck all the available check boxes, except for the first one (CPU 0) and click OK. You can now close the Task Manager and continue to use CardAccess.

