

# PIR1710 PASSIVE INFRARED SENSOR • INSTALLATION INSTRUCTIONS

## SPECIFICATIONS

**Coverage (l x w):** 70' x 60' (21.3m x 18.3m) at 20°C (68°F), typical.

**Operating Temperature:** -10° to + 50°C (14° to 122°F)

**Mounting:** Wall or corner, 12' (3.6m) max.

**Output:** Normally-Closed Form-A Relay

**Relay Time:** Approximately 3 seconds

### Contact Ratings

**Alarm Relay:** 100mA, 24Vdc with internal 10Ω current-limiting resistor

### Power-Supply Requirements

**Note:** This unit is intended for operation from a power source that provides a 4 hour battery backup in the event of a power failure.

**Filtered Dc:** 10.6 to 16Vdc nominal with battery backup from control panel.

**Current Drain:** 23mA (idle or alarm) at 12Vdc (nominal)  
**Physical**

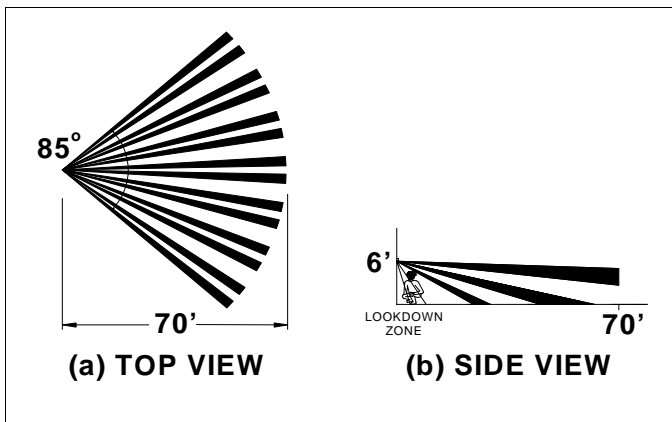
**Dimensions:** 3.3" x 2.5" x 1.9" (8.4cm x 6.4cm x 4.8cm) (HxWxD)

**Shipping Weight:** 5oz (142gm)

## FEATURES

- Lookdown zone provides coverage directly beneath sensor
- Selectable Fixed (2 Pulse Bipolar) or Signal-Selective Processing™ (SSP) Detection for optimum immunity to false alarms
- Unique circuit design protects against false alarms due to radio-frequency interference
- Vertical and horizontal aiming capabilities
- Dual-element sensor
- Large lens area assures high sensitivity
- Small size with ample wiring space
- Power filtering provides protection against transients
- Corner mountable

## STANDARD LENS

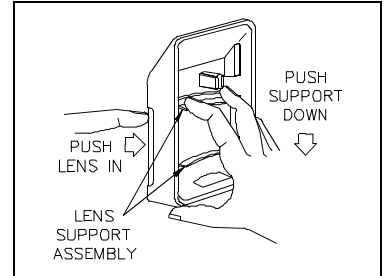


Standard Lens coverage pattern.

## REPLACING THE LENS

The lens is mounted on a Lens Support insert that fits inside the front cover. To install one of the accessory lenses, proceed as follows.

1. While pushing the lens in at the top, with fingers straddling the LED jewel, press down at the top of the Lens Support as shown until the support clears the three top retainers. Be careful not to dislodge the look-down-lens window.



2. Push the Lens Support up until it clears the three bottom retainers and remove the assembly.

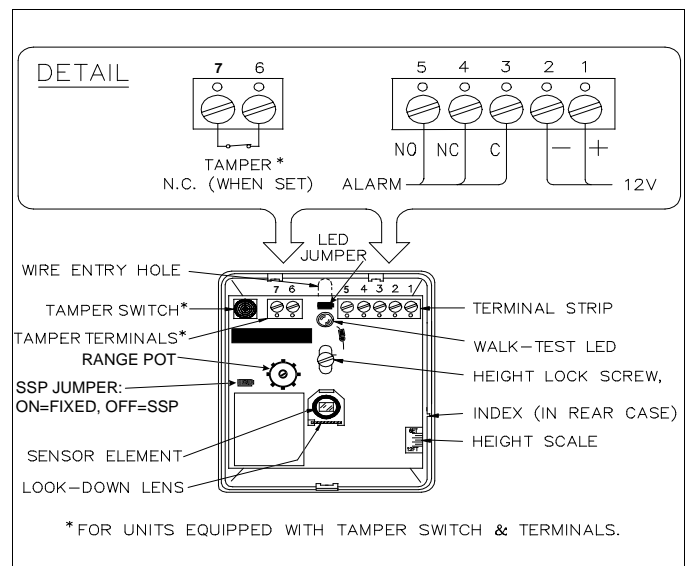
3. Straighten the lens tabs and slide out the lens.

4. Install the replacement lens: slide the tabs into the slots in the Lens Support, then bend the tabs inward.

5. Install the assembly into the front cover (be sure lens is right side up, as it will fit either way): slip the Lens Support behind the lower retainers, then push in at the top until the Lens Support snaps into place.

## MOUNTING & WIRING

Allow at least three minutes for the unit to settle. The LED will not function until the unit is ready. Do not point the unit at sources of heat, such as radiators, space heaters, etc. Adjust beams laterally by sliding the Lens Support horizontally within its retainers. Loosen the Height Lock Screw and set the board's height scale to the mounted height of the unit. Retighten the screw. To block a problem zone, apply a piece of lens foil (supplied) to the *inside* segment of the lens representing that zone. To extinguish the LED after walk-testing, place a jumper in the LED Jumper position.



PIR1710 mounting and wiring.



**Napco Security Systems, Inc.**  
 333 Bayview Avenue, Amityville, New York 11701  
 Sales, Repairs and Technical Service (Toll Free): (800) 645-9445  
 Technical Service Direct Line (Toll Free): (800) 645-9440

## NAPCO SECURITY LIMITED WARRANTY

NAPCO SECURITY Systems, Inc. (NAPCO) warrants its products to be free from manufacturing defects in materials and workmanship for twelve months following the date of manufacture. NAPCO will, within said period, at its option, repair or replace any product failing to operate, without charge to the original purchaser or user.

In case of defect, contact the security professional or locksmith who installed and maintains your security system. In order to exercise the warranty, the product must be returned by the security professional or locksmith, shipping costs prepaid and insured to NAPCO. After repair or replacement, NAPCO assumes the cost of returning products under warranty. NAPCO shall have no obligation under this warranty, or otherwise, if the product has been repaired by others, improperly installed, improperly used, abused, altered, damaged, subjected to accident, nuisance, flood, fire or acts of God, or on which any serial numbers have been altered, defaced or removed. NAPCO will not be responsible for any dismantling, reassembly or reinstallation charges.

THERE ARE NO WARRANTIES, EXPRESS OR IMPLIED, WHICH EXTEND BEYOND THE DESCRIPTION ON THE FACE THEREOF. THERE IS NO EXPRESS OR IMPLIED WARRANTY OF MERCHANTABILITY OR A WARRANTY OF FITNESS FOR A PARTICULAR PURPOSE. ADDITIONALLY, THIS WARRANTY IS IN LIEU OF ALL OTHER OBLIGATIONS OR LIABILITIES ON THE PART OF NAPCO.

Any action for breach of warranty, including but not limited to any implied warranty or merchant ability, must be brought within the six months following the end of the warranty period. IN NO CASE SHALL NAPCO BE LIABLE TO ANYONE FOR ANY CONSEQUENTIAL OR INCIDENTAL DAMAGES FOR BREACH OF THIS OR ANY OTHER WARRANTY, EXPRESS OR IMPLIED, EVEN IF THE LOSS OR DAMAGE IS CAUSED BY THE SELLER'S OWN NEGLIGENCE OR FAULT.

This warranty contains the entire warranty. It is the sole warranty and any prior agreements or representations, whether oral or written, are either merged herein or are expressly canceled. NAPCO neither assumes, nor authorizes any other person purporting to act on its behalf to modify, to change, or to assume for it, any other warranty or liability concerning its products.

In no event shall NAPCO be liable for an amount in excess of NAPCO's original selling price of the product, for the loss or damage, whether direct, indirect, incidental, consequential, or otherwise arising out of any failure of the product. Seller's warranty, as herein above set forth, shall not be enlarged, diminished or affected by, and no obligation or liability shall arise or grow out of, Seller's rendering of technical advice or service in connection with Buyer's order of the goods furnished thereunder.

### **NAPCO RECOMMENDS THAT THE ENTIRE SYSTEM BE COMPLETELY TESTED WEEKLY.**

**WARNING:** Despite frequent testing, and due to, but not limited to, any or all of the following: criminal tampering, electrical or communications disruption, it is possible for the system to fail to perform as expected. NAPCO does not represent that the product/system may not be compromised or circumvented; or that the product or system will prevent any personal injury or property loss by burglary, robbery, fire or otherwise; nor that the product or system will in all cases provide adequate warning or protection. A properly installed and maintained alarm or lock may only reduce risk of burglary, robbery, fire or otherwise but it is not insurance or a guarantee that these events will not occur. CONSEQUENTLY, SELLER SHALL HAVE NO LIABILITY FOR ANY PERSONAL INJURY, PROPERTY DAMAGE, OR OTHER LOSS BASED ON A CLAIM THE PRODUCT FAILED TO GIVE WARNING. Therefore, the installer should in turn advise the consumer, and the consumer is hereby advised, to take any and all precautions for his or her safety including but not limited to, fleeing the premises and calling police or fire department, in order to mitigate the possibilities of harm and/or damage.

NAPCO is not an insurer of either the property or safety of the user's family or employees, and limits its liability for any loss or damage including incidental or consequential damages to NAPCO's original selling price of the product regardless of the cause of such loss or damage.

Some states do not allow limitations on how long an implied Warranty lasts or do not allow the exclusion or limitation of incidental or consequential damages, or differentiate in their treatment of limitations of liability for ordinary or gross negligence, so the above limitations or exclusions may not apply to you. This Warranty gives you specific legal rights and you may also have other rights which vary from state to state.