



333 Bayview Avenue  
Amityville, New York 11701  
For Sales and Repairs, (800) 645-9445  
For Technical Service, (800) 645-9440

© NAPCO 2004

# Quick-Modem-W

## INSTALLATION INSTRUCTIONS

WI1321 8/04

### GENERAL DESCRIPTION

The NAPCO Quick-Modem-W is a modem which is fully compatible with the NAPCO PCD-Windows Quickloader download software.

### SPECIFICATIONS

Input Power: 9 VAC, 750-1000mA, 9.8 W (from supplied AC adapter).

### CONNECTION

Connect the Quick-Modem-W to the J2 connector of the PCI2000 Interface module using a standard modem cable (not supplied).

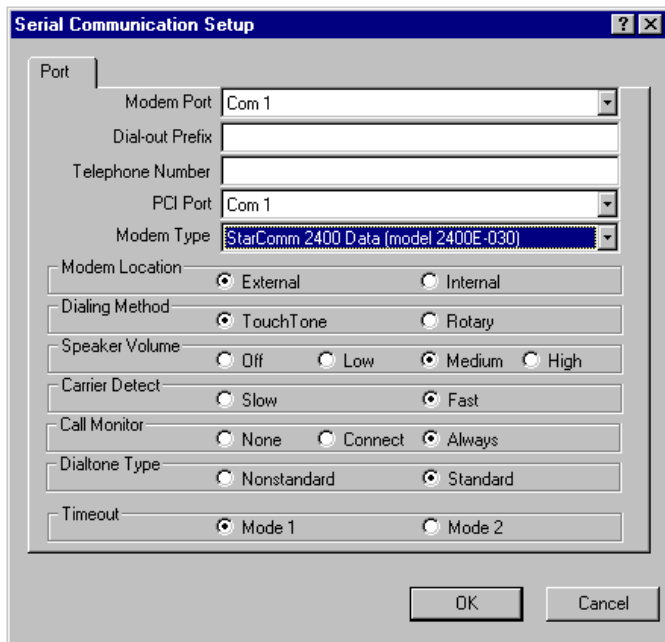
### CONFIGURATION

The Quick-Modem-W must be configured as follows for use with PCD-Windows:

Click **File, Modem Settings** to open the **Serial Communication Setup** dialog (see image below).

**NOTE:** Although image below displays "Com 1" in the Port fields, the Port number may be different in your system.

Select a *Port* to be used with the Quick-Modem-W. Enter a *Dial-out Prefix* (if required) and the *Telephone Number*. Select a *PCI Port* from the drop-down menu. For *Modem Type*, select "StarComm 2400 Data (model 2400E-030)".



### IMPORTANT NOTE

The enclosed modem supports:

- NAPCO's PCD-Windows Quickloader Download software, Version 4.54 (enclosed) operating on MS Windows 98/2000/XP  
and
- DOS PCD 2000/3000, Versions 3.34B/2.34B operating on DOS 4.0 or higher.

When operating under DOS, the "CallBack Download" feature will not function. However, this feature is fully supported on the NAPCO PCD-Windows Quickloader Version 4.54 or greater. The problem observed is:

*When using the enclosed modem with DOS PCD 2000/3000 only, an alarm panel callback connection can not be established. DOS PCD 2000/3000 will call out through the modem to initiate the callback, and the alarm panel will call back. However, DOS PCD 2000/3000 will not properly recognize the call back through the modem and eventually time-out, indicating:*

*Establish Connection Unsuccessful  
Port/Cable/Modem/PCI Failure  
:No RxData*

**NOTE:** If the feature "CallBack Download" is disabled in the panel, a connection will be established immediately.

Due to the unavailability of industry support for DOS products in general, providing future support of the "CallBack Download" feature in PCD2000 is not planned. If DOS support of the "CallBack Download" feature is required, please contact NAPCO Customer Service at 1-800-645-9445 and inquire about the availability of legacy DOS modems.

**NOTE:** *If modem is to be used with PCD 2000/3000 (DOS application), refer to WI1066.*

NAPCO Security Systems, Inc.  
333 Bayview Avenue • Amityville, New York 11701  
For Sales and Repairs, call Toll Free: (800) 645-9445

For Technical Assistance, Contact the NAPCO  
Toll Free Helpline ☎ (800) 645-9440

## NAPCO LIMITED WARRANTY

NAPCO SECURITY SYSTEMS, INC. (NAPCO) warrants its products to be free from manufacturing defects in materials and workmanship for *thirty-six months* following the date of manufacture. NAPCO will, within said period, at its option, repair or replace any product failing to operate correctly without charge to the original purchaser or user.

This warranty shall not apply to any equipment, or any part thereof, which has been repaired by others, improperly installed, improperly used, abused, altered, damaged, subjected to acts of God, or on which any serial numbers have been altered, defaced or removed. Seller will not be responsible for any dismantling or reinstallation charges.

THERE ARE NO WARRANTIES, EXPRESS OR IMPLIED, WHICH EXTEND BEYOND THE DESCRIPTION ON THE FACE HEREOF. THERE IS NO EXPRESS OR IMPLIED WARRANTY OF MERCHANTABILITY OR A WARRANTY OF FITNESS FOR A PARTICULAR PURPOSE. ADDITIONALLY, THIS WARRANTY IS IN LIEU OF ALL OTHER OBLIGATIONS OR LIABILITIES ON THE PART OF NAPCO.

Any action for breach of warranty, including but not limited to any implied warranty of merchantability, must be brought within the six months following the end of the warranty period.

IN NO CASE SHALL NAPCO BE LIABLE TO ANYONE FOR ANY CONSEQUENTIAL OR INCIDENTAL DAMAGES FOR BREACH OF THIS OR ANY OTHER WARRANTY, EXPRESS OR IMPLIED, EVEN IF THE LOSS OR DAMAGE IS CAUSED BY THE SELLER'S OWN NEGLIGENCE OR FAULT.

In case of defect, contact the security professional who installed and maintains your security system. In order to exercise the warranty, the product must be returned by the security professional, shipping costs prepaid and insured to NAPCO. After repair or replacement, NAPCO assumes the cost of returning products under warranty. NAPCO shall have no obligation under this warranty, or otherwise, if the product has been repaired by others, improperly installed, improperly used, abused, altered, damaged, subjected to accident, nuisance, flood, fire or acts of God, or on which any serial numbers have been altered, defaced or removed. NAPCO will not be responsible for any dismantling, reassembly or reinstallation charges.

This warranty contains the entire warranty. It is the sole warranty and any prior agreements or representations, whether oral or written, are either merged herein or are expressly cancelled. NAPCO neither assumes, nor

authorizes any other person purporting to act on its behalf to modify, to change, or to assume for it, any other warranty or liability concerning its products.

In no event shall NAPCO be liable for an amount in excess of NAPCO's original selling price of the product, for any loss or damage, whether direct, indirect, incidental, consequential, or otherwise arising out of any failure of the product. Seller's warranty, as hereinabove set forth, shall not be enlarged, diminished or affected by and no obligation or liability shall arise or grow out of Seller's rendering of technical advice or service in connection with Buyer's order of the goods furnished hereunder.

NAPCO RECOMMENDS THAT THE ENTIRE SYSTEM BE COMPLETELY TESTED WEEKLY.

**Warning:** Despite frequent testing, and due to, but not limited to, any or all of the following; criminal tampering, electrical or communications disruption, it is possible for the system to fail to perform as expected. NAPCO does not represent that the product/system may not be compromised or circumvented; or that the product or system will prevent any personal injury or property loss by burglary, robbery, fire or otherwise; nor that the product or system will in all cases provide adequate warning or protection. A properly installed and maintained alarm may only reduce risk of burglary, robbery, fire or otherwise but it is not insurance or a guarantee that these events will not occur. CONSEQUENTLY, SELLER SHALL HAVE NO LIABILITY FOR ANY PERSONAL INJURY, PROPERTY DAMAGE, OR OTHER LOSS BASED ON A CLAIM THE PRODUCT FAILED TO GIVE WARNING. Therefore, the installer should in turn advise the consumer to take any and all precautions for his or her safety including, but not limited to, fleeing the premises and calling police or fire department, in order to mitigate the possibilities of harm and/or damage.

NAPCO is not an insurer of either the property or safety of the user's family or employees, and limits its liability for any loss or damage including incidental or consequential damages to NAPCO's original selling price of the product regardless of the cause of such loss or damage.

Some states do not allow limitations on how long an implied warranty lasts or do not allow the exclusion or limitation of incidental or consequential damages, or differentiate in their treatment of limitations of liability for ordinary or gross negligence, so the above limitations or exclusions may not apply to you. This Warranty gives you specific legal rights and you may also have other rights which vary from state to state.